

Things to consider before treating MS with DMTs

B and T lymphocytes are important to **multiple sclerosis (MS)** pathogenesis, and thus are often targeted by **disease modifying therapies (DMTs)**.



Relapsing forms of MS (RMS) account for **>80%** of MS cases at initial diagnosis.



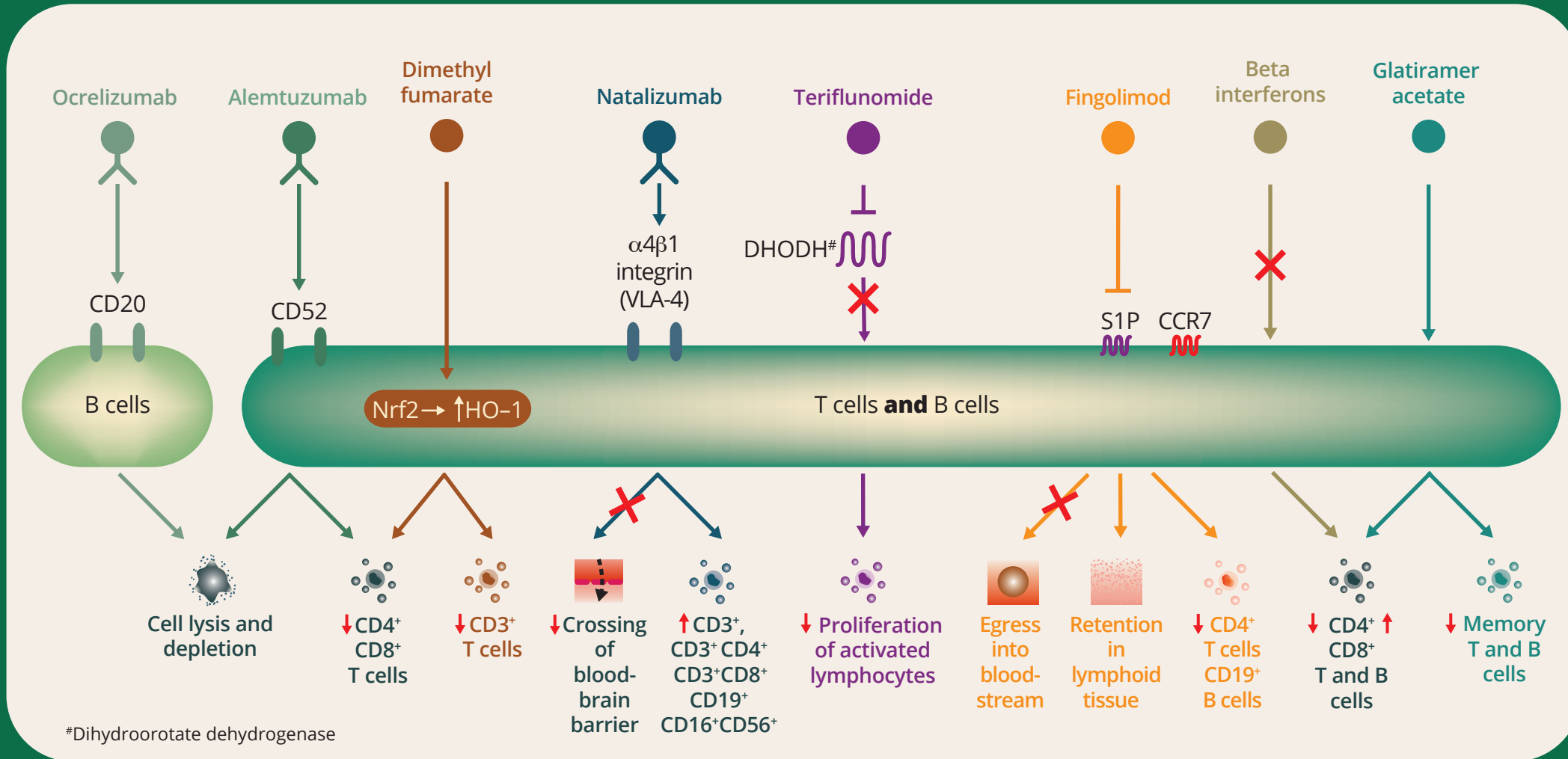
MS DMTs target B and T cells via different MOAs and preferentially affect certain subtypes.

Treatment conundrum

Should DMT's effect on lymphocytes and immune systems be considered when managing patients with RMS?



Lymphocytes should be monitored in patients receiving DMTs.



DMTs alter lymphocyte counts, but overall rate of serious infection appeared low.

A nuanced treatment approach that considers the underlying mechanisms of action of specific DMTs and individual patient characteristics is essential.